



# Iowa Ag News – Cattle on Feed

Iowa Field Office · 210 Walnut Street Ste 833 · Des Moines IA 50309 · (515) 284-4340 · (800) 772-0825  
fax (515) 284-4342 or (800) 719-1794 · [www.nass.usda.gov/ia](http://www.nass.usda.gov/ia)

Cooperating with the Iowa Department of Agriculture and Land Stewardship

March 23, 2012

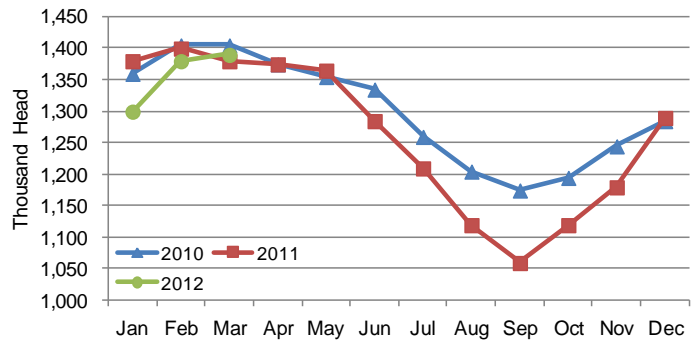
Media Contact: Greg Thessen

**Cattle and calves on feed** for slaughter market in Iowa for all feedlots totaled 1.39 million on March 1, 2012 according to the USDA, National Agricultural Statistics Service, Iowa Field Office. The inventory is up 1 percent from February 1, 2012 and up 1 percent from March 1, 2011. Feedlots with a capacity greater than 1,000 head had 670,000 head on feed, up 3 percent from last month and up 3 percent from last year. Feedlots with a capacity less than 1,000 head had 720,000 head on feed, down 1 percent from last month and down 1 percent from last year.

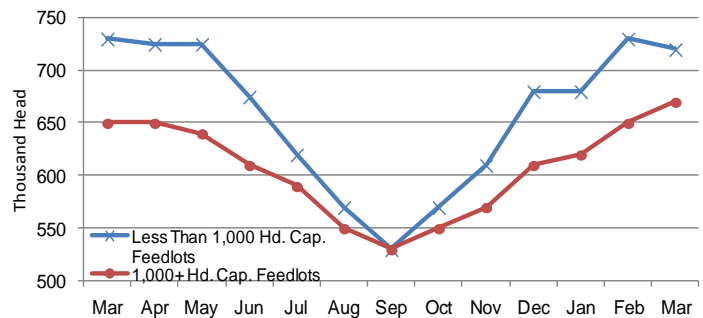
**Placements** during February totaled 135,000 head, a decrease of 39 percent from last month but up 6 percent from last year. Feedlots with a capacity greater than 1,000 head placed 85,000 head, down 17 percent from last month but up 20 percent from last year. Feedlots with a capacity less than 1,000 head placed 50,000 head. This is down 57 percent from last month and down 9 percent from last year.

**Marketings** for February were 119,000 head, down 10 percent from last month and down 15 percent from last year. Feedlots with a capacity greater than 1,000 head marketed 62,000 head, down 11 percent from last month and down 22 percent from last year. Feedlots with a capacity less than 1,000 head marketed 57,000 head, down 8 percent from last month and down 5 percent from last year. **Other disappearance** totaled 6,000 head.

**Cattle on Feed, Inventory on all Feedlots, Iowa: 2010-2012**



**Cattle on Feed, Inventory by Feedlot Capacity, Iowa: Past 12 Months**



## All Cattle on Feed, Iowa

Item	Lots 1,000+ Head	Lots Less than 1,000 Head	All Lots
	(1,000 Head)	(1,000 Head)	(1,000 Head)
Cattle on Feed, February 1, 2012 .....	650	730	1,380
February Placements .....	85	50	135
February Marketings .....	62	57	119
February Other Disappearance .....	3	3	6
Cattle on Feed, March 1, 2012 .....	670	720	1,390

## Cattle on Feed: Number on Feed, Placements, Marketings, and Other Disappearance by Month, 1,000+ Capacity Feedlots

[Cattle and calves on feed are animals for slaughter market being fed a ration of grain or other concentrates and are expected to produce a carcass that will grade select or better.]

State	Cattle on Feed March 1			Placements during February			Marketings during February			February Disappearance other than Slaughter <sup>1</sup>		
	2011 (1,000 Head)	2012 (1,000 Head)	'12 as % of '11 (Percent)	2011 (1,000 Head)	2012 (1,000 Head)	'12 as % of '11 (Percent)	2011 (1,000 Head)	2012 (1,000 Head)	'12 as % of '11 (Percent)	2011 (1,000 Head)	2012 (1,000 Head)	'12 as % of '11 (Percent)
Arizona .....	269	279	104	29	25	86	25	21	84	1	1	100
California .....	460	500	109	43	50	116	50	53	106	3	2	67
Colorado .....	1,070	1,090	102	215	165	77	210	200	95	5	15	300
Idaho .....	220	230	105	31	37	119	40	41	103	1	1	100
<b>Iowa .....</b>	<b>650</b>	<b>670</b>	<b>103</b>	<b>71</b>	<b>85</b>	<b>120</b>	<b>79</b>	<b>62</b>	<b>78</b>	<b>2</b>	<b>3</b>	<b>150</b>
Kansas .....	2,220	2,200	99	365	370	101	405	385	95	10	15	150
Nebraska .....	2,430	2,570	106	350	410	117	365	390	107	15	20	133
Oklahoma .....	360	340	94	60	48	80	73	61	84	2	2	100
South Dakota ..	265	260	98	45	47	104	48	45	94	2	2	100
Texas .....	2,830	2,840	100	380	380	100	405	415	102	15	25	167
Washington ....	205	233	114	31	41	132	30	32	107	3	3	100
Other States ...	407	465	114	47	56	119	61	50	82	2	4	200
United States .	11,386	11,677	103	1,667	1,714	103	1,791	1,755	98	61	93	152

<sup>1</sup>Includes death loss, movement from feedlots to pasture, and shipments to other feedlots for further feeding.

### United States Cattle on Feed

**Cattle and calves on feed** for slaughter market in the United States for feedlots with capacity of 1,000 or more head totaled 11.7 million head on March 1, 2012. The inventory was 3 percent above March 1, 2011.

**Placements in feedlots** during February totaled 1.71 million, 3 percent above 2011. Net placements were 1.62 million head. During February, placements of cattle and calves weighing less than 600 pounds were 400,000, 600-699 pounds were 335,000, 700-799 pounds were 469,000, and 800 pounds and greater were 510,000.

**Marketings of fed cattle** during February totaled 1.76 million, 2 percent below 2011.

**Other disappearance** totaled 93,000 during February, 52 percent above 2011.

**Cattle on Feed Inventory on 1,000+ Capacity Feedlots – United States**

